



How Evolving GIS Technology Addresses the Leonel Rondon Pipeline Safety Act

A Digital Utility® Solution

NGA Spring Operations Conference
Dan Dessanti & Ron Yoshimura



JULY 31, 2019

SENATOR MARKEY SECURES PASSAGE OF “LEONEL RONDON PIPELINE SAFETY ACT” IN SENATE PIPELINE SAFETY REAUTHORIZATION BILL

Introduced April 9, 2019, and passed on Dec 22, 2020

- **Includes 7 key points for pipeline operators regarding regulatory compliance**
- **What is your organization doing to prepare?**
- **What technology can you leverage to better address?**

1. DIMP, Cast Iron, MAOP

*Each distribution integrity plan (DIMP) developed by an operator of a gas distribution pipeline to include the risks from the presence of cast iron pipes and mains and risks that may result from the operation of a pipeline above the **maximum allowable operating pressure (MAOP)***

UDC Gas Compliance Manager® (CMGR) / DIMP

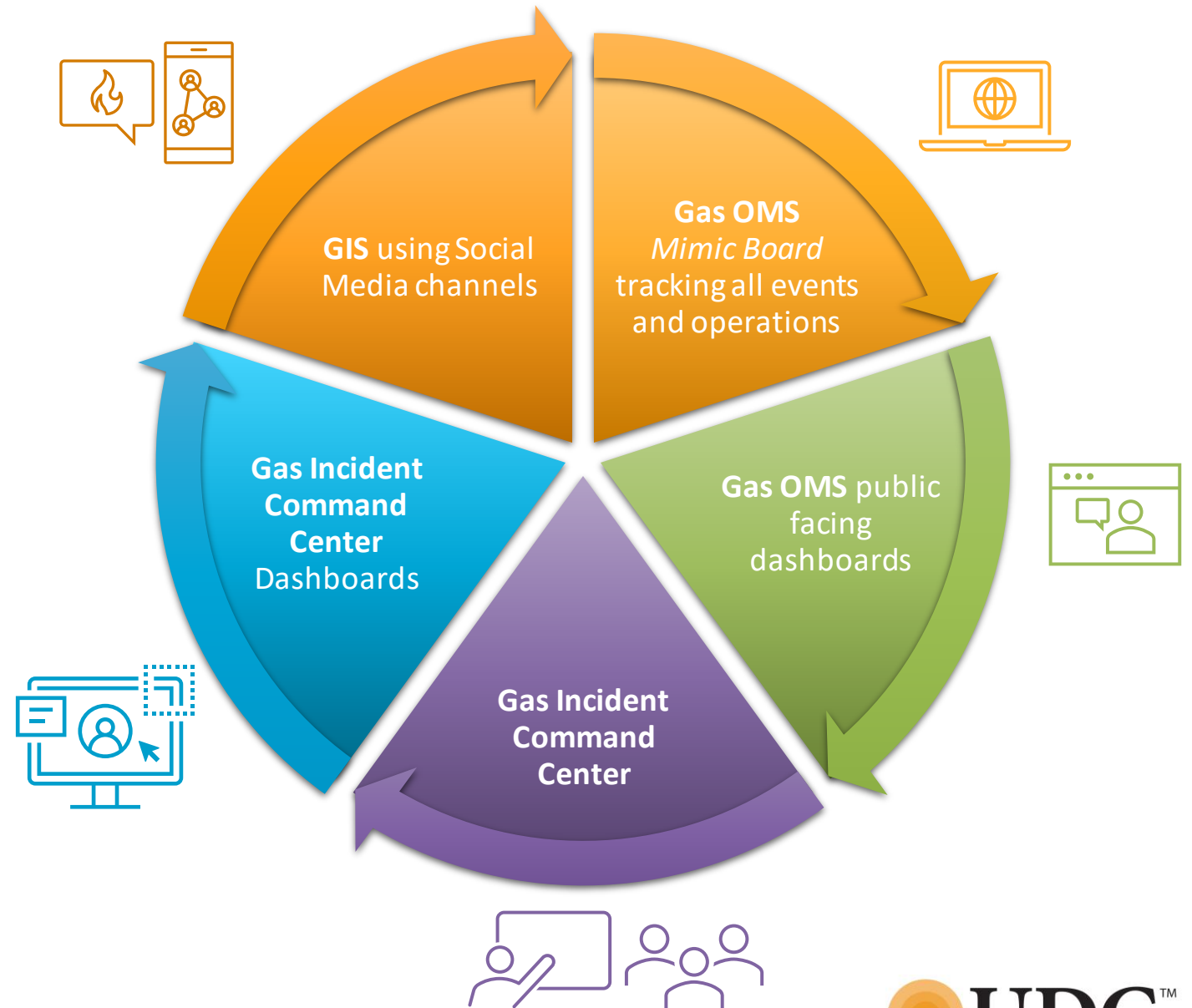
- Cast Iron Leak Survey CMGR

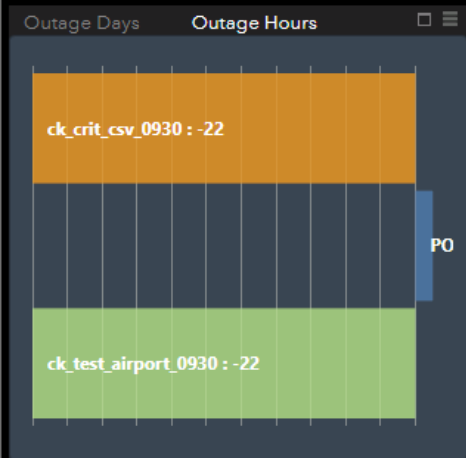
Synergi / DNVGL and/or Apps within your GIS to calculate values based on MAOP

- Build out Calculator using GIS values and MAOP
- Implement Calculator defaults if GIS is missing data

2. Emergency Communication Protocols

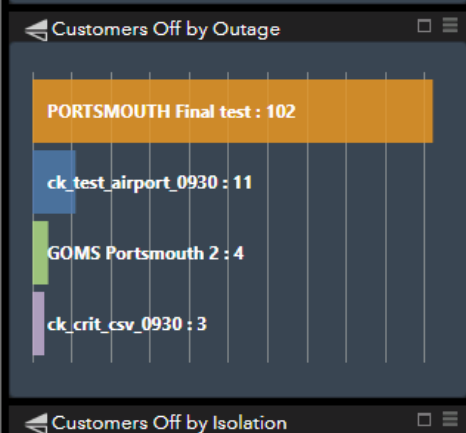
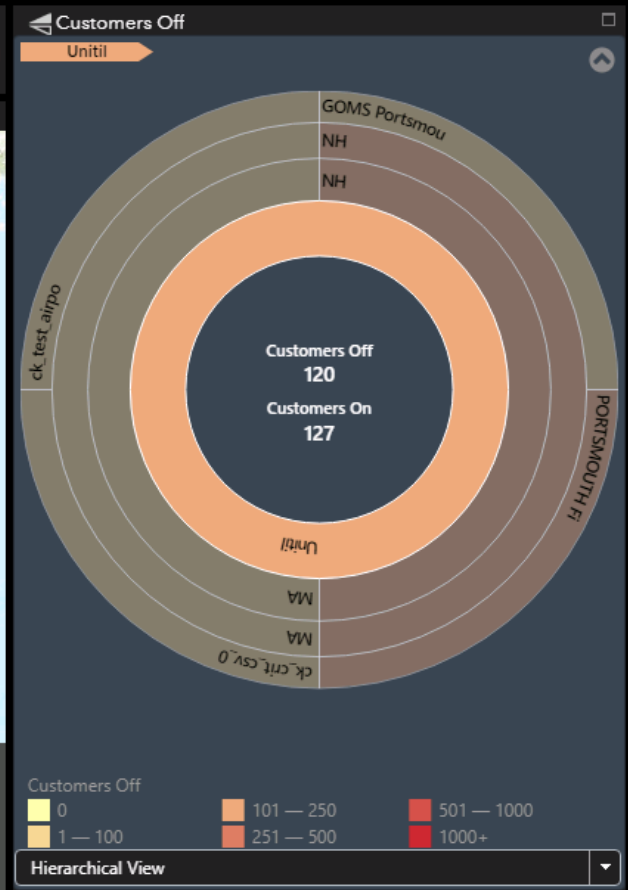
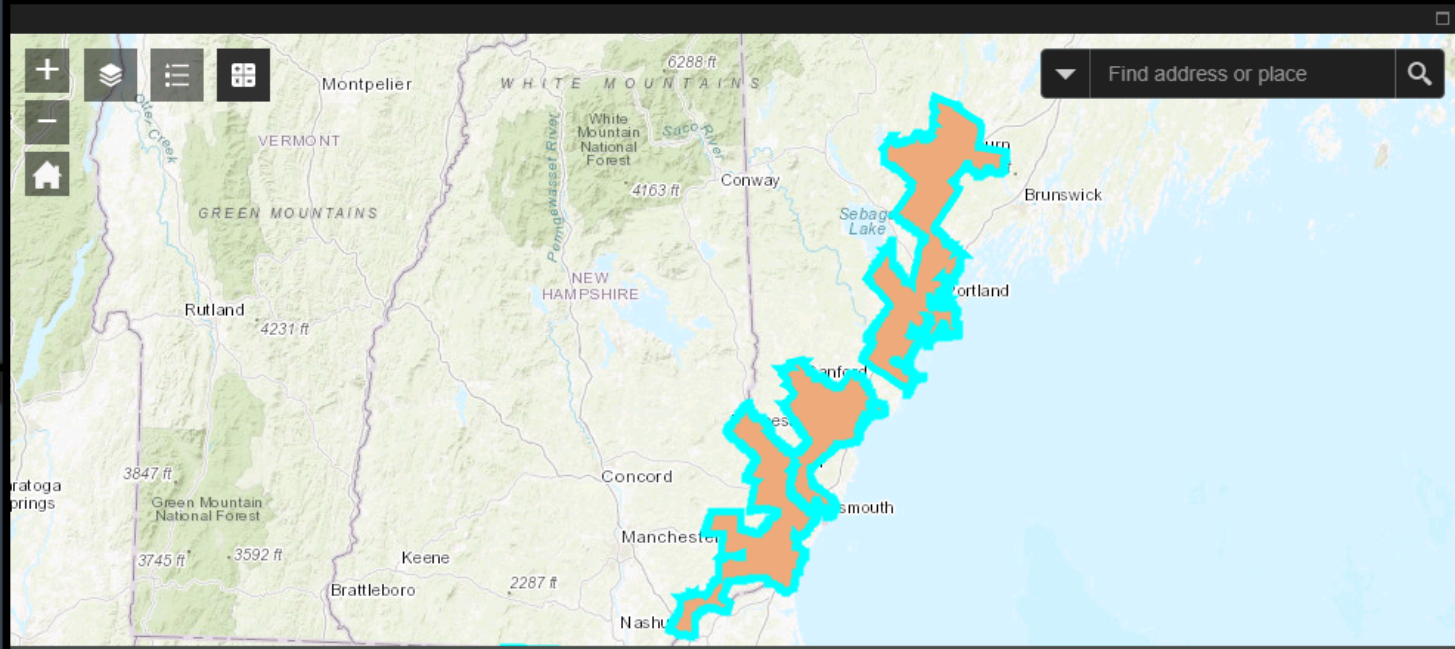
Operators to establish protocols for communicating with fire, police and other relevant public officials after a disaster that includes fires, explosions or one or more fatalities





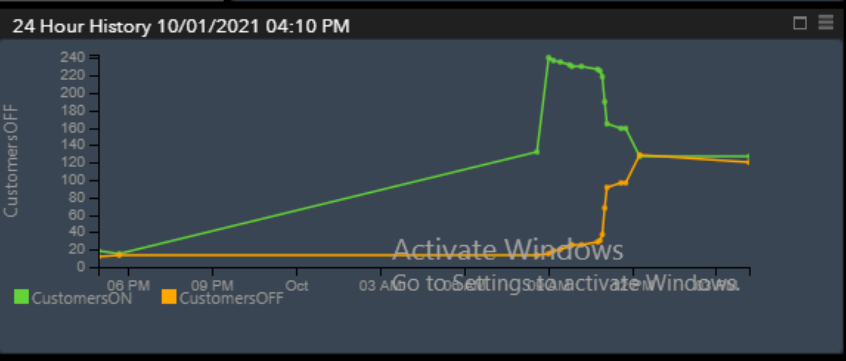
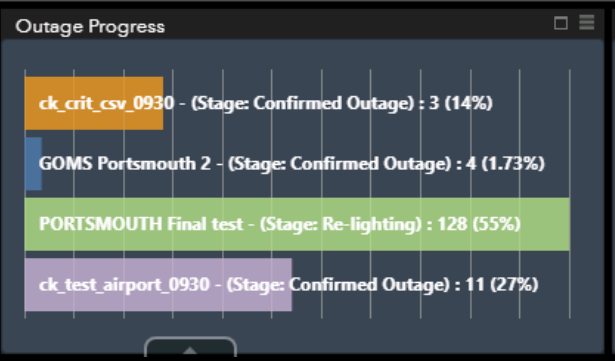
IsCompleted: 0 item(s) selected

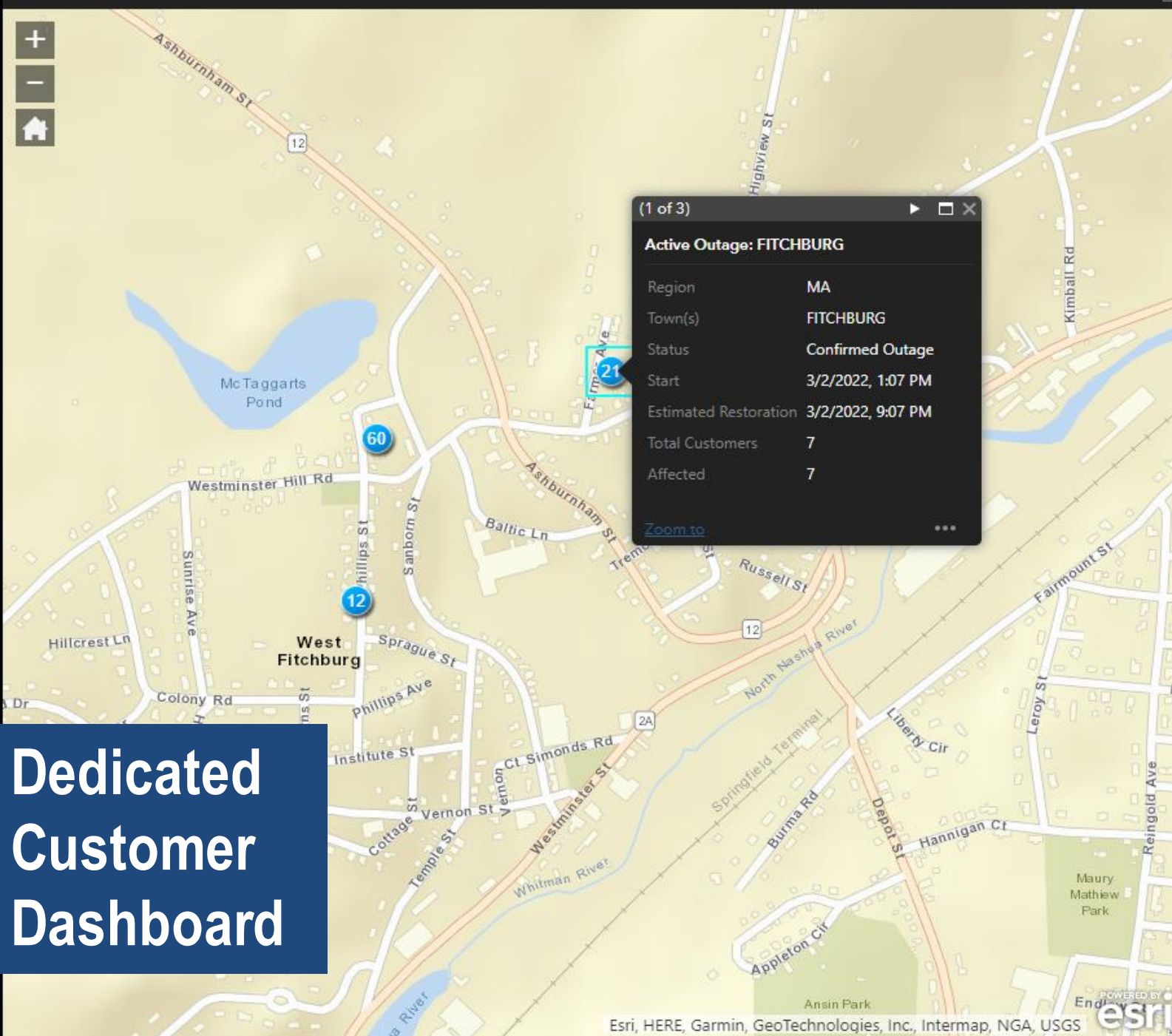
Last Refreshed: 10/01/2021 4:11 PM



Total Customers	Customers Off	Percent Off	Customers On	Percent On
247	120	48.58	127	51.42

Dedicated Internal Dashboard





Dedicated Customer Dashboard

Data Refreshed

03/14/2022 12:47 PM

108 Affected

11 Outages

Affected by Region

Region	Affected	Served
MA	31	16,474
ME	7	34,759
NH	8	35,250

Showing 1 to 3 of 3 entries

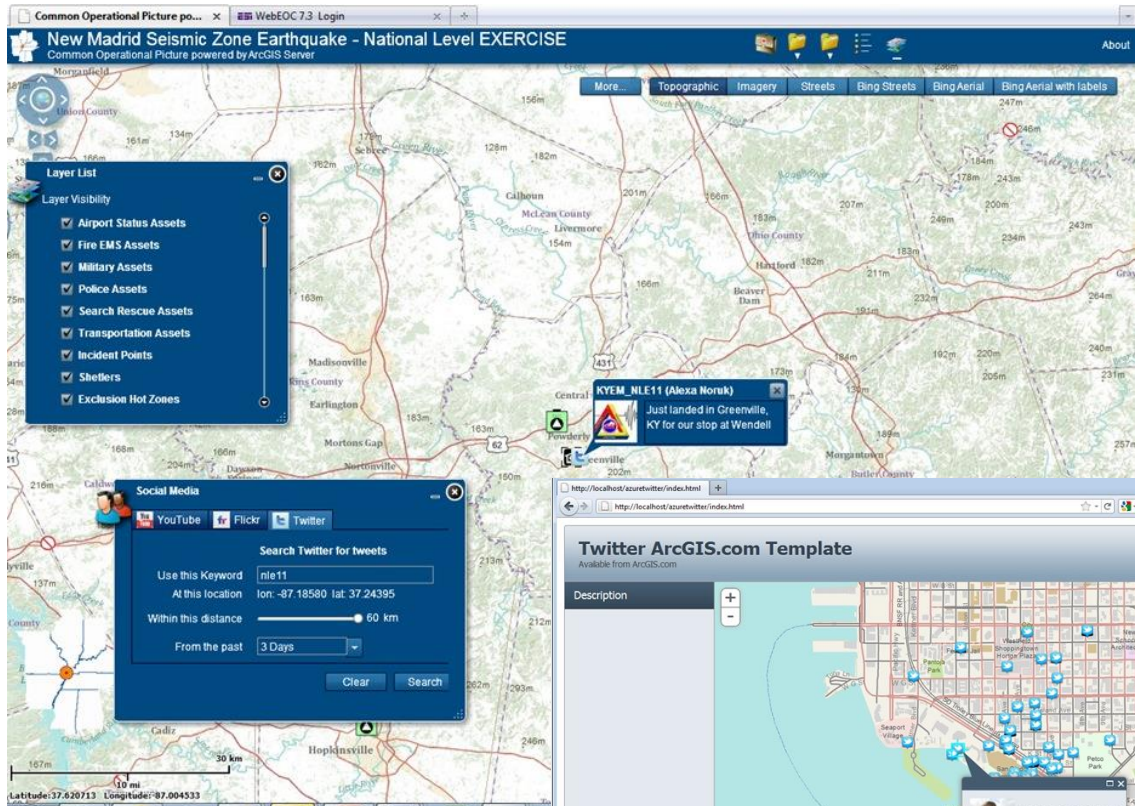
Affected by Street

Street	Estimated Restoration	Affected
ASHBURNHAM ST, FITCHBURG	03/02/22 08:52 PM	2
PHILLIPS ST, FITCHBURG	03/02/22 08:52 PM	4
SANBORN ST, FITCHBURG	03/02/22 08:52 PM	1
SIMONDS RD, FITCHBURG	03/02/22 09:09 PM	4
SPRAGUE ST, FITCHBURG	03/02/22 09:07 PM	7
SUNRISE AVE, FITCHBURG	02/25/22 10:02 PM	8
TEMPLE ST, FITCHBURG	02/25/22 10:02 PM	7
WESTMINSTER HILL RD, FITCHBURG	03/02/22 08:52 PM	13

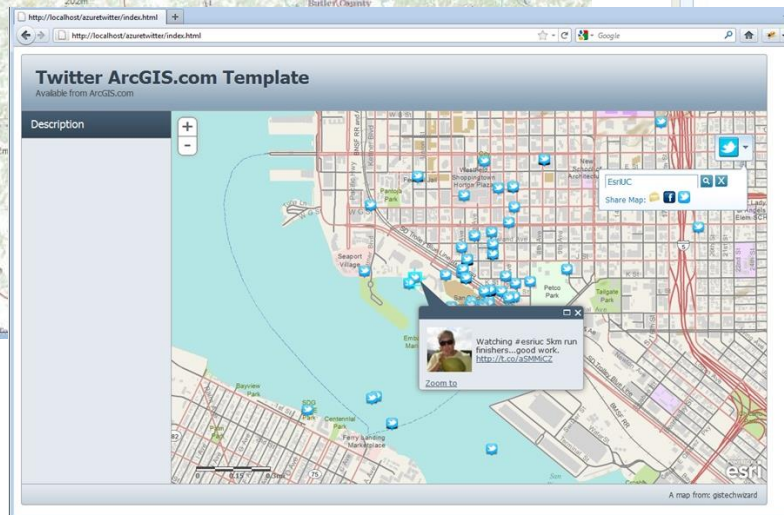
Showing 1 to 8 of 8 entries

Incorporating Social Media

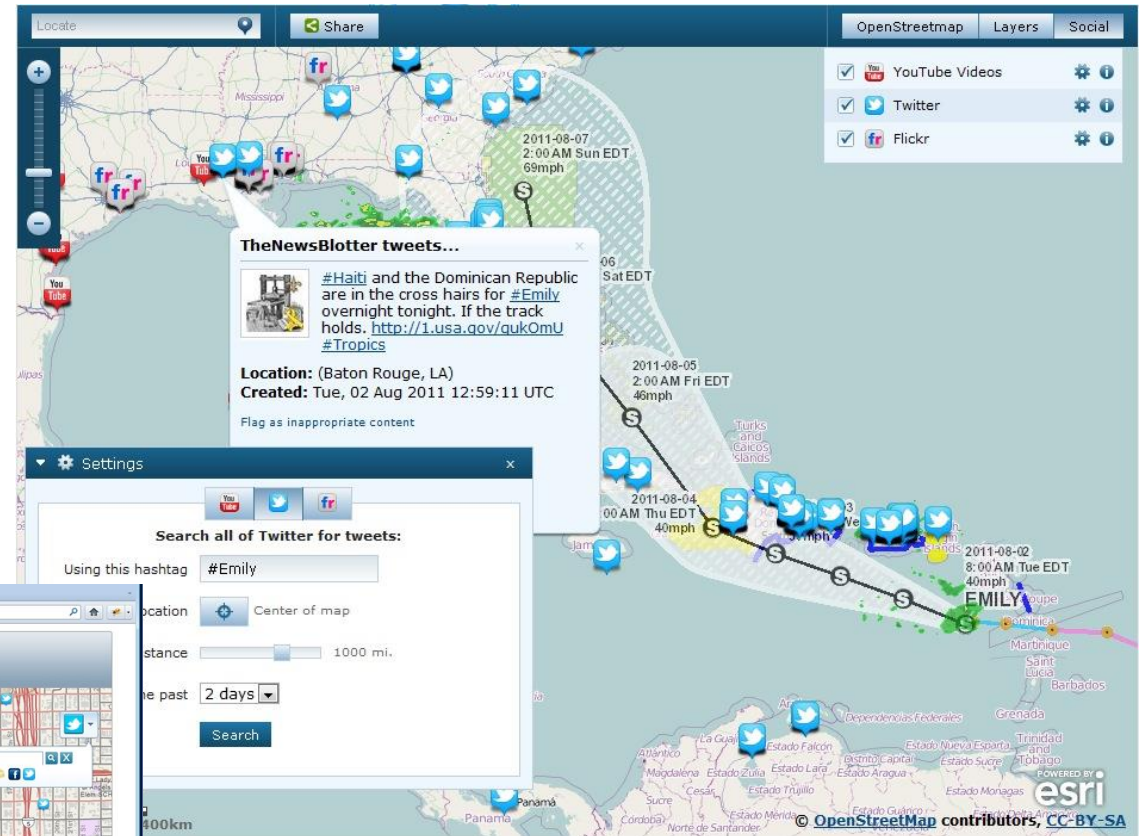
Sample Social Media Tools from Esri



Social Media Widget



Twitter Template



Public Information Map

3. Emergency Procedural Manuals

Procedural manuals for operations, maintenance, and emergencies to include certain written procedures

The screenshot displays the UDC Inspection web application interface. At the top, the UDC logo and 'Inspection' title are visible. The page shows a map area for 'CP Area: CP Area Highlight (GEMS Map)'. Below the map, there are two main sections: 'Facility Details' and 'Inspection Attributes'. The 'Facility Details' section includes fields for CPA Name (D44-3), Division (Diablo), County (Contra Costa), Location Description (Fou), GlobalID, and Work Center (Concord). The 'Inspection Attributes' section includes a dropdown for 'As Found / Recommended *' with options 'As Found - Less than -1VDC', 'As Found - Greater than -1VDC', and 'Recommended'. Other fields include Division * (Humboldt), Plat Map(s) * (45), CP Type * (CPA, CPI), CP ID *, ES Records Location (Office) * (Modesto), and 'Type of Test Performed' with sub-sections for Pipe-to-Soil Potential *, Boundary *, and PCM *. At the bottom, there is a 'Complete' checkbox, 'SAVE' and 'CANCEL' buttons, and a 'Form Information' sidebar on the right showing 'Recorded Date: 1/30/2018' and 'Inspected By: UDC User'. A red circle highlights the 'Operating Procedures' link in the sidebar, and another red circle highlights the 'Recommended' option in the 'As Found / Recommended *' dropdown. A yellow box labeled 'CMGR' contains a list: 'Recommended Procedures' and 'Linked Reference Materials'. Red arrows point from the 'CMGR' box to the 'Recommended' option and the 'Operating Procedures' link.

UDC™ Inspection

Legend Layers Basemap UDC User

CP Area: CP Area Highlight (GEMS Map)

▼ Facility Details

CPA Name: D44-3

Division: Diablo

County: Contra Costa

Location Description: Fou

GlobalID: {8F5F2EA0-E31E-44CC-BEF4-110CF44A9064}

Work Center: Concord

▼ Inspection Attributes

As Found / Recommended * As Found - Less than -1VDC As Found - Greater than -1VDC Recommended

Division * Humboldt

Plat Map(s) * 45

CP Type * CPA CPI

CP ID *

ES Records Location (Office) * Modesto

Type of Test Performed

Pipe-to-Soil Potential * Yes No

Boundary * Yes No

PCM * Yes No

Reference Cell Calibration

Surveyed By * UDC User

Form Information

Recorded Date: 1/30/2018

Inspected By: UDC User

Operating Procedures

CMGR

- Recommended Procedures
- Linked Reference Materials

Complete SAVE CANCEL

Procedural Manuals – Gas OMS



UDC™ Inspection

Turn Off Customer

Inspection Attributes

Completed Date* 04/06/2023
User Name* fhall
Turn Off Location* Riser Valve
Turn Off Supervisor Name* Gas Outage

Form Information

Recorded Date: 4/6/2023
Inspected By: UDC GOMS
Until

Operating Procedures

- jedTurn Off/On customer meter
- Exercise Meter

Exceptions

- Cannot Get In
- ADMIN - Forced Entry
- Unable To Locate Meter at Address
- ADMIN - No Meter Found at Location
- Meter Found Locked
- Verify Exclusion from Outage
- ADMIN - Meter Excluded by Back Office

Facility Details

Complete

GOMS Inspector

Turn On Customer

Inspection Details

Completed Date* April 6 2023
User Name* fhall
Customer Turned On* Yes No
Turn On Supervisor Name* Gas Outage

Exceptions

- Exception: Cannot Get In No
- Exception: ADMIN - Forced Entry No
- Exception: Equipment Not Re-lit No
- Exception: Meter Found Locked No
- Exception: Customer Piping Needs to be Repaired No
- Exception: Fire Damage No
- Exception: ADMIN - Exempt from Turn On No

Facility Details

(1 Simonds Rd)
Recorded Date: 04/06/2023
Inspected By: UDC GOMS Unitil

Operating Procedures:

- jedTurn Off/On customer meter
- Exercise Meter

Complete

Web

Selection complexity driven by content management system

Mobile

4. Pipeline Safety Mgmt Framework

Operators to develop and implement a pipeline safety management systems framework

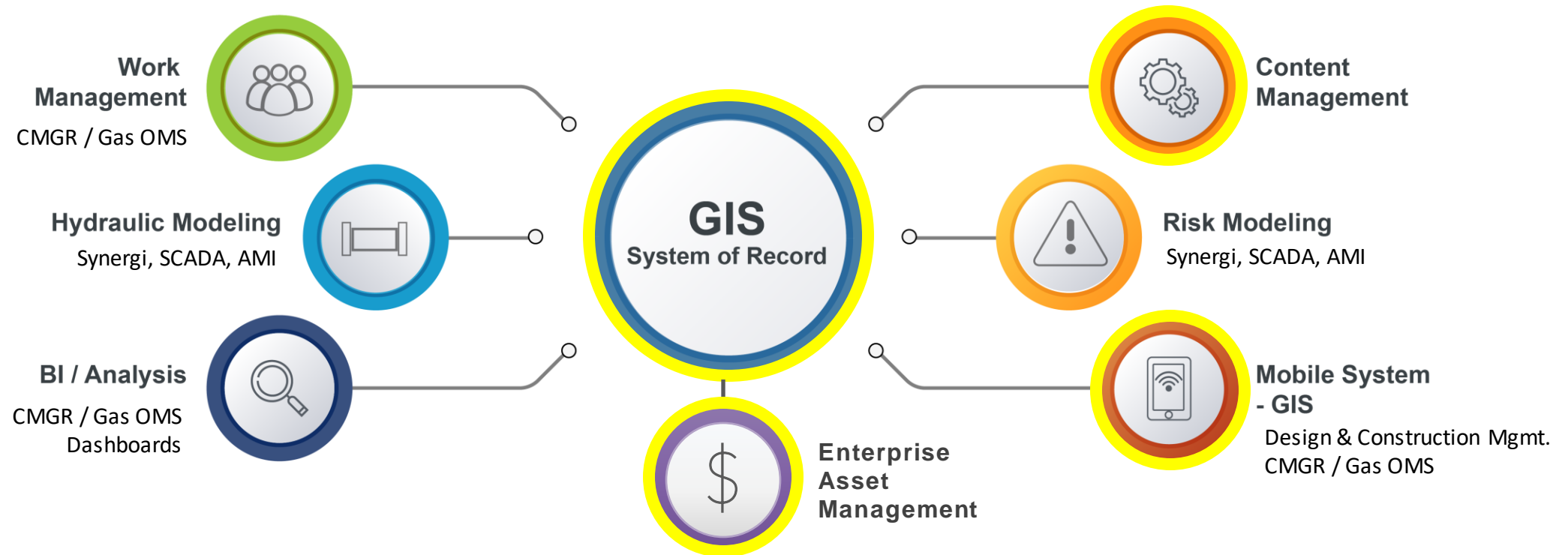
Based on our experience with gas utilities/operators and their systems, we suggest that the automation to support safety management will come from a mix of the following systems being integrated with GIS as it is central to data governance and visualization.



4. Pipeline Safety Mgmt Framework

Operators to develop and implement a pipeline safety management systems framework

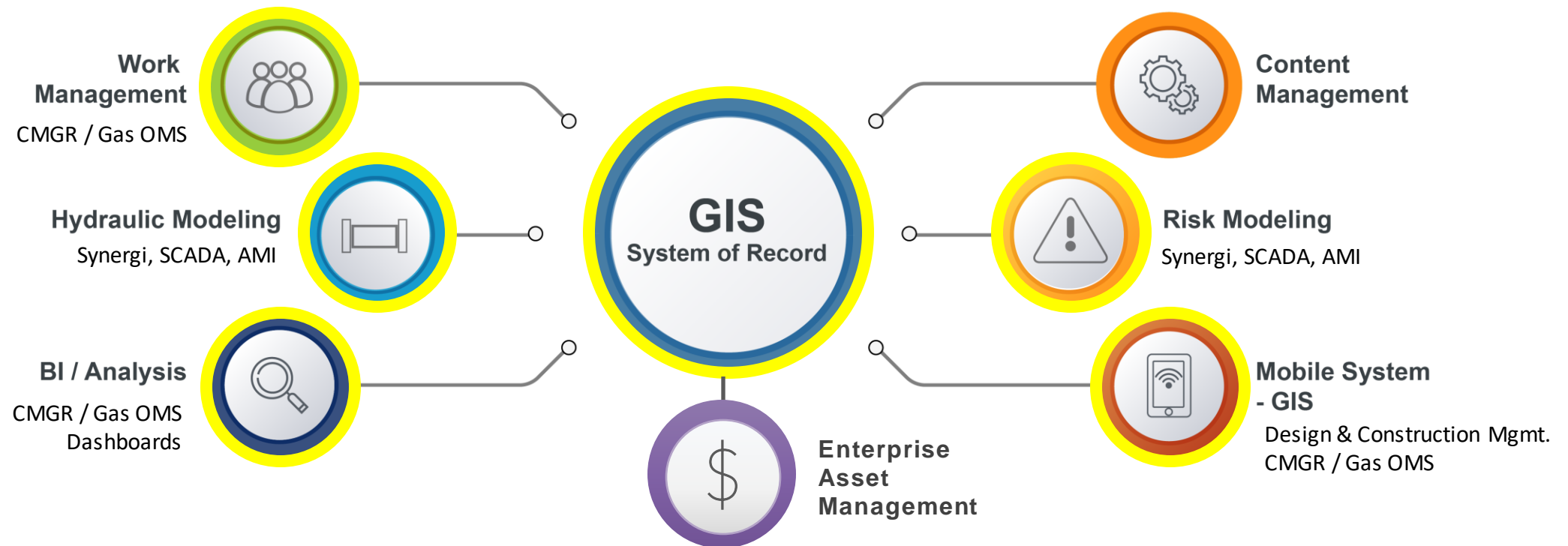
Standard digital as-built process - posting data to GIS, Enterprise Asset Management (if implemented), and Content Management from a Design & Construction Maintenance mobile tool



4. Pipeline Safety Mgmt Framework

Operators to develop and implement a pipeline safety management systems framework

- GOMS uses the maps and records for operations integrated with engineering (Synergi), SCADA, AMI, WMS
- GOMS shows all SCADA and AMI over-pressure alarms and Synergi generated over-pressure calculations

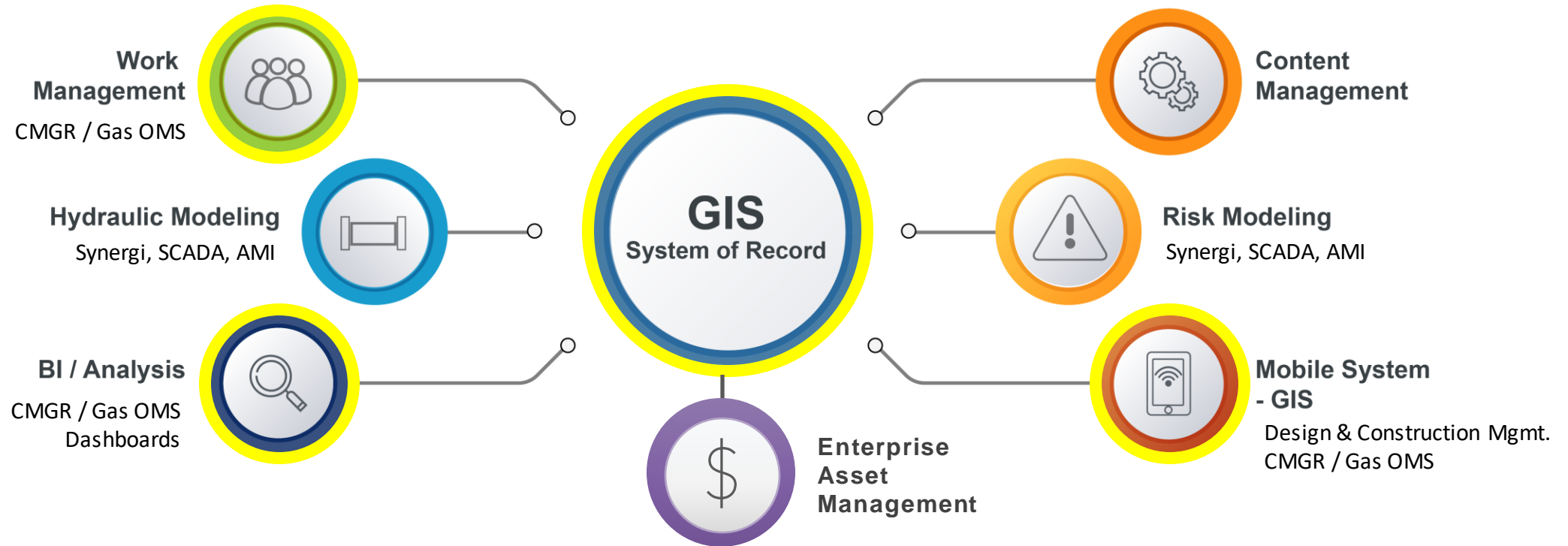


4. Pipeline Safety Mgmt Framework

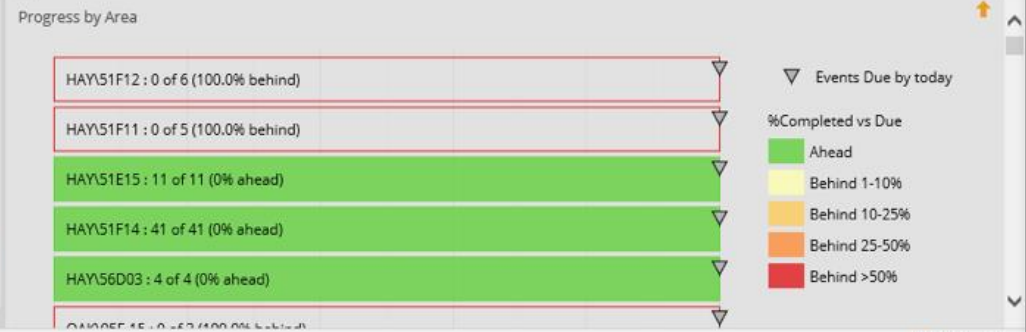
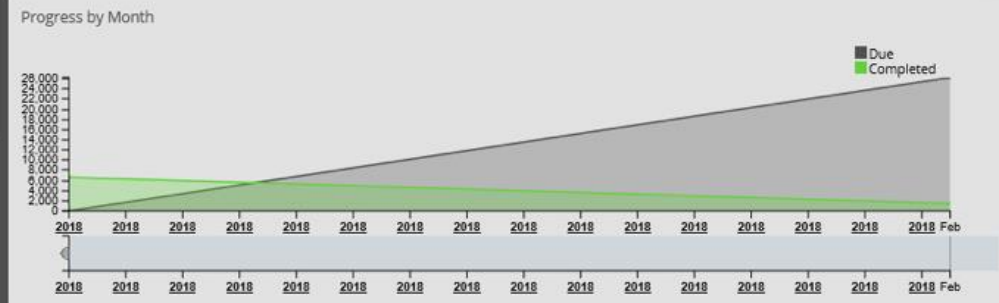
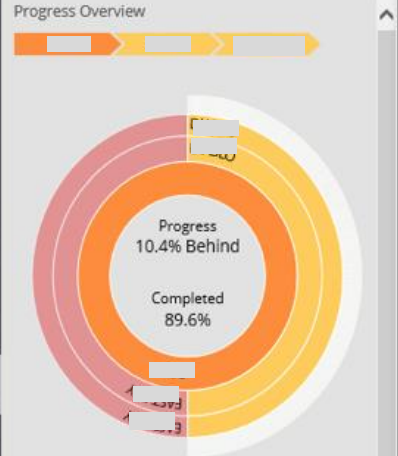
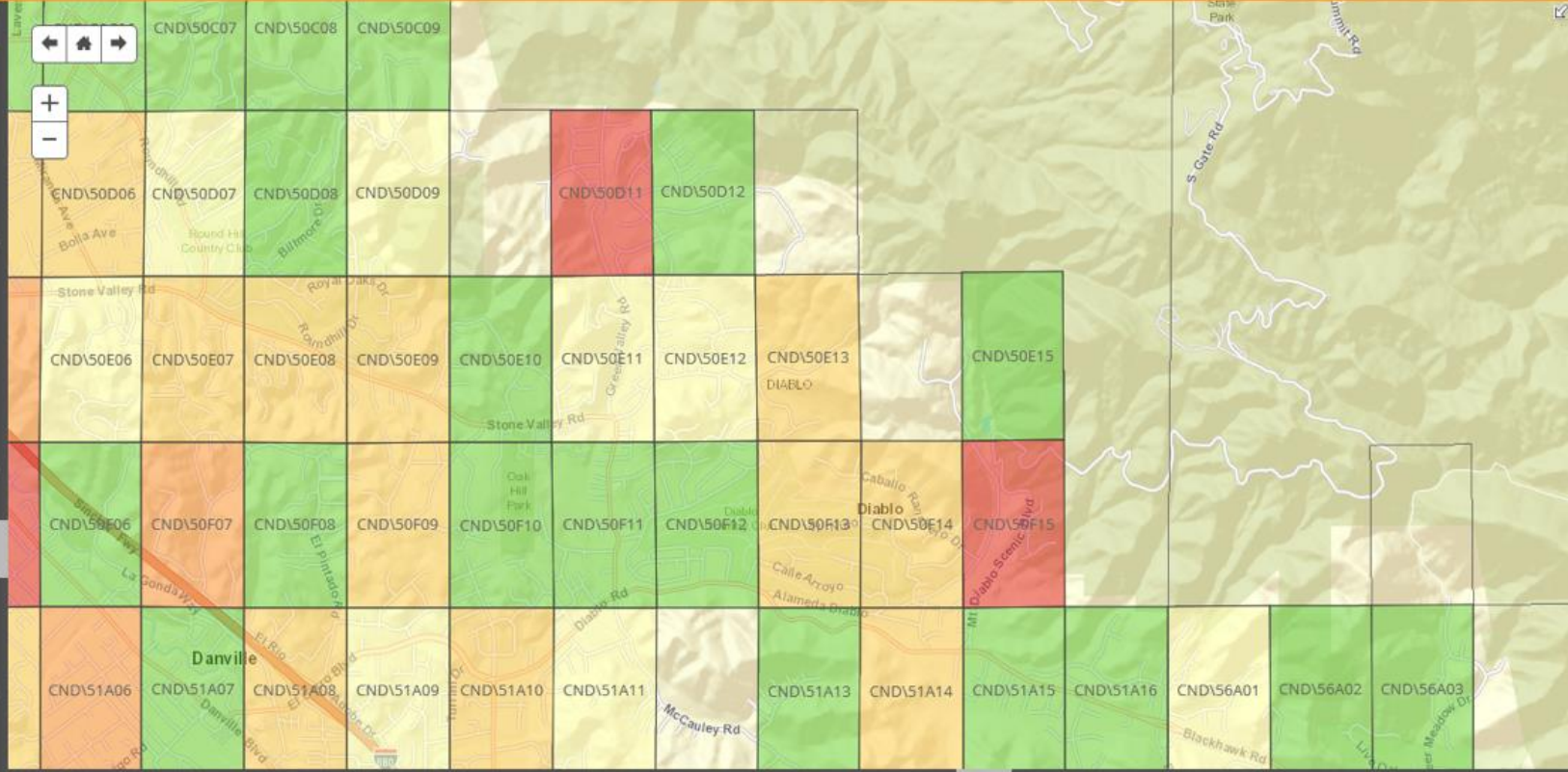
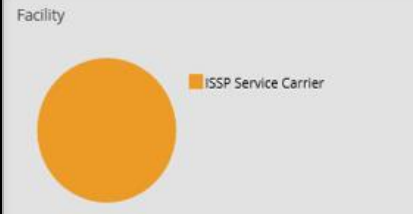
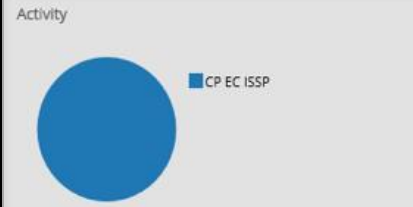
Operators to develop and implement a pipeline safety management systems framework

CMGR Dashboards:

- All programs, program to date, year-to-date
- CP Circuits highlighting those unprotected and for how long
- Provide full transparency to PUCs with daily updates from field on all programs



Jan 1, 2018 - Dec 31, 2018



5. Current TVC Record Keeping For Distribution

*Operators to develop and maintain **traceable, verifiable, complete**, and up-to-date records of the gas distribution system in each region of operation*



Digital Construction
As-built Process

GIS to Work Order Traceability
GIS go Content Management
Traceability



Compliance Manager

Status Program To Date
Status Year To Date Of All Programs
Same Dashboard Reporting for
all Compliance Programs
Detailed Traceability of all AOCs
raised in the Field

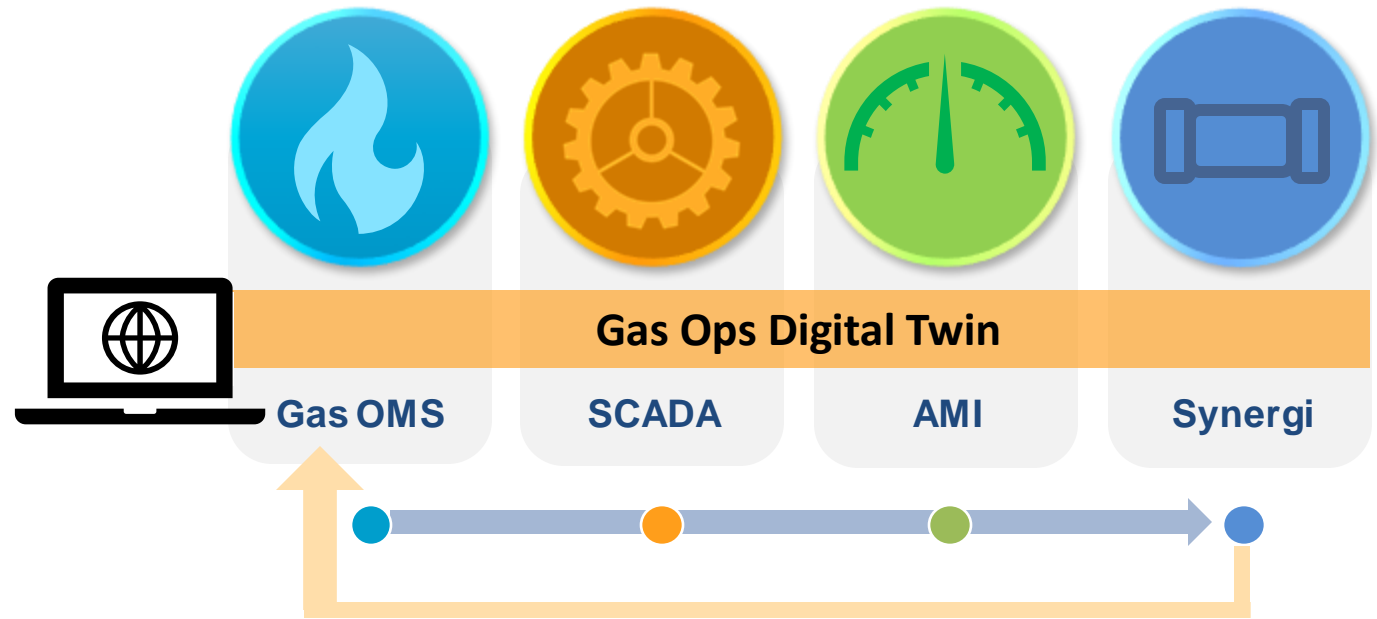


Gas OMS Utilizing TVC Records –
Proves company has TVC when all
Gas OMS functions work properly

Isolation Trace, Customers Affected,
Gas Pressure Recordings,
Gas Engineering Values Generated,
Key Valve List Generation

6. Proper Support for Monitoring / Regulating Gas Pressure Systems

The development of standards that promote sufficient staffing for monitoring and regulating gas pressure levels by each operator



- Every operation, including all changes in regulating set points, is entered in Gas OMS and is sent to Synergi (along with current SCADA pressure and temperatures)
- Engineering results are generated and displayed in Gas OMS along pipeline and at regulators

7. Penalties increased to: \$20M and \$200M

SEC. 7. CIVIL PENALTIES.

Section 60122(a)(1) of title 49, United States Code, is amended—

- (1) in the first sentence, by striking “\$200,000” and inserting “\$20,000,000”;
 - (2) in the third sentence, by striking “\$2,000,000” and inserting “\$200,000,000”; and
 - (3) by adding at the end the following: “The Secretary shall annually adjust the penalties under this paragraph for inflation.”.
-



Emergency Response & Mutual Assistance

Outage Drill at UNITIL



Unitil
energy for **life**

Supporting Mutual Assistance

Assign work spatially and enable assistance workers to record work digitally, monitor progress

Options for supporting...

- Mobile authentication policy of utility is followed
- Mutual Assistance crew members can complete work through website
 - Requires online connection



MA USER CONSIDERATIONS

Access

- Provide Access: Office Authentication/Active Directory
 - MFA, Generic External User IDs

Devices

- Bring your own
 - Non-Android currently

Onboarding Process

- How to manage users and get online
- Preparing for the future

Drills – Planning/Execution

- Unitil conducted a mock drill on December 8th, 2021
- The 2021 gas emergency exercise simulated an impact to a heating system at a Gate Station in the Portland / Westbrook area; Heat exchanger leaking glycol out of the station into the nearby area
 - Personnel safety (injury) and environmental impact
 - System impacts from low gas temperatures including leaks
 - Resulting in an interruption to service in the area

Simulated Gas Outage

- 8 Participants from Service Department who had never seen GOMS
- Mix of techs who had used an iPad and those who had never used a tablet
- 1 Hour Onboarding included overview of UDC Admin and UDC Field GOMS
 - Every tech was assigned 50 customers to navigate to customer location and simulate Turn Off and record the Activity on the iPad (including Exceptions)
- Solicited Feedback after drill

Drills – Lessons Learned



All 8 techs felt that the UDC application was intuitive and easy to use.



1 hour training was more than sufficient to train new users



Liked the ability to use the map to navigate to affected customers



No Connectivity Issues/Product was Responsive



Wish list was that Unutil would include house numbers on the parcel layer



Overall, really preferred using the GOMS application to managing sheets of paper and having to call in status updates



Questions?





Thank You

Keep the
conversation going...

Dan Dessanti

dandessanti@outlook.com

udcus.com

