

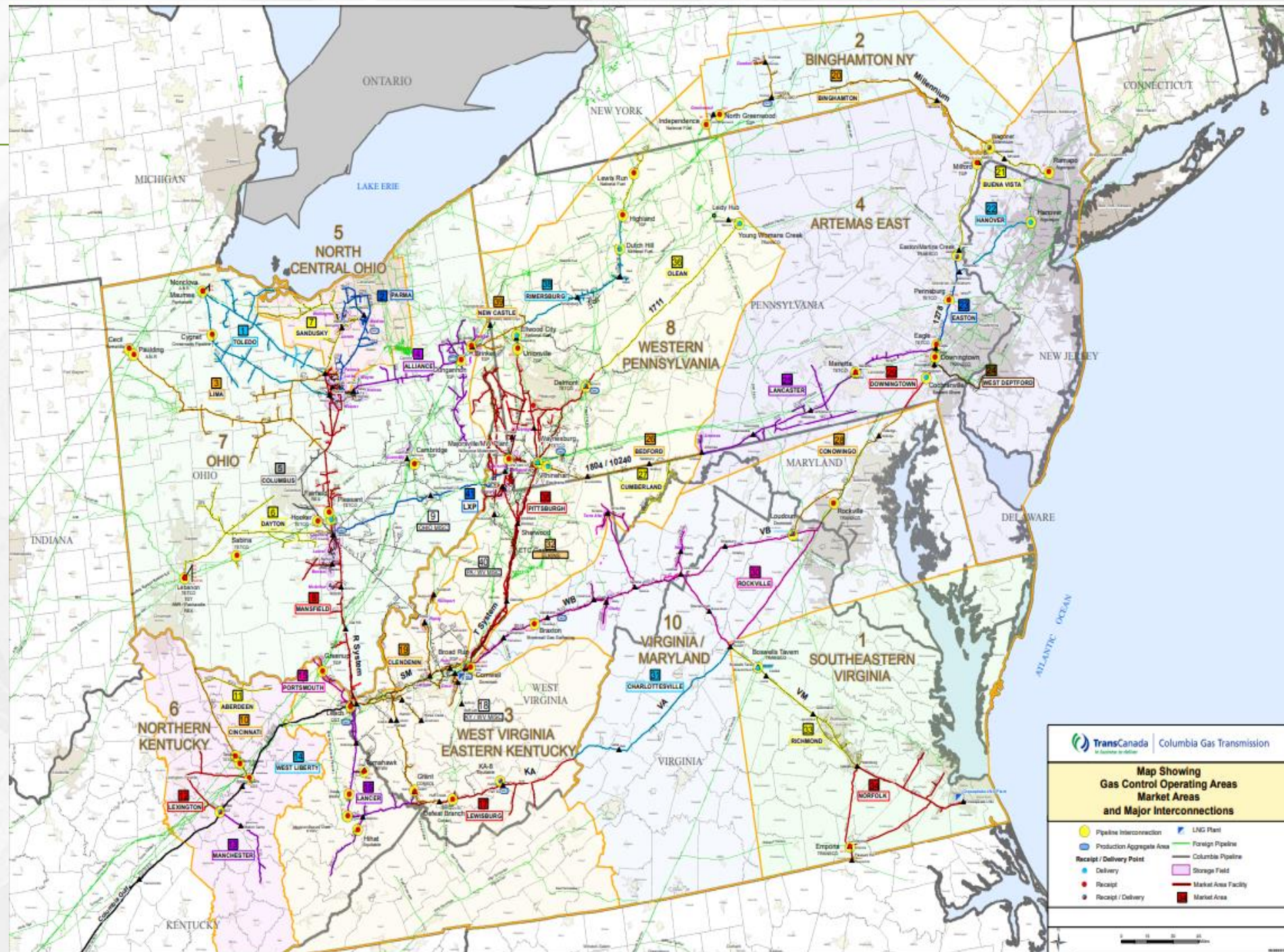
TC Energy

1. Columbia Gas Transmission (TCO)
 - Map, Operational Outlook & Storage Update
2. Millennium Pipeline Company (MPC)
 - Map, Operational Outlook
3. Portland Natural Gas Transmission System (PNGTS)
 - Map, Operational Outlook

Operational notices for each pipeline can be viewed at <https://ebb.tceconnects.com/infopost/>

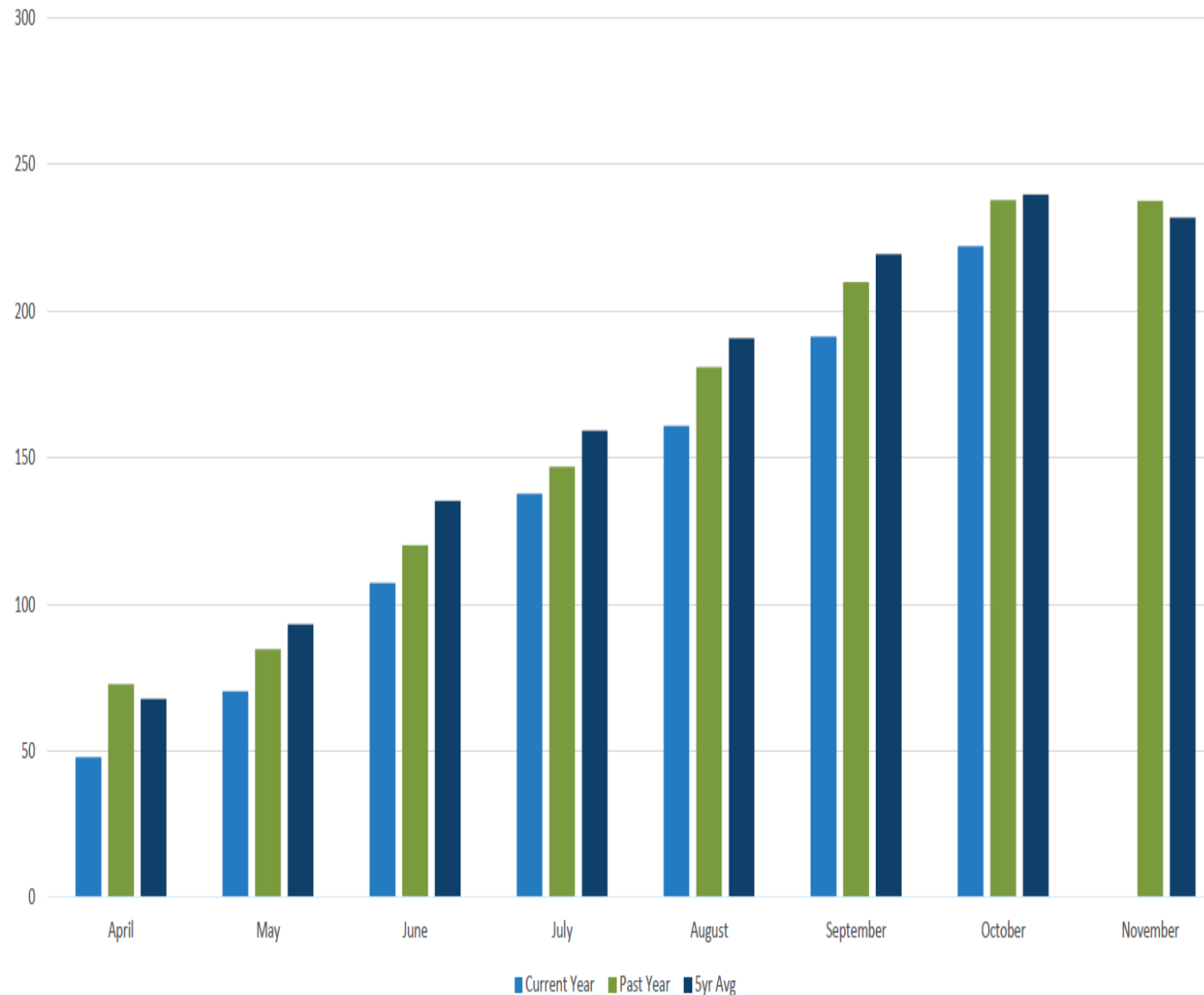
TCO

- 11,500 mile reticulated pipeline
- Access to 37 storage fields with 282 Bcf of working gas
- Transport an average of 7.3 Bcf per day
- Gas Control in Charleston, WV



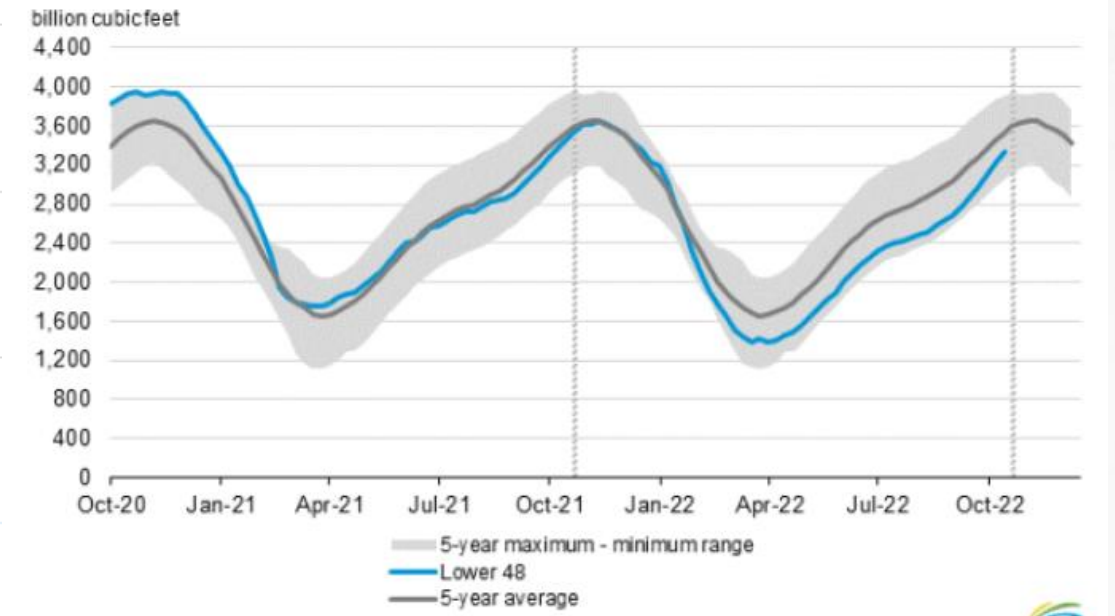
Storage inventory position – 2022 vs previous years

Physical working gas as of October 16, 2022



Date	TCO Storage Inventory (MMcf)
October 14, 2022	220,310
October 15, 2021	236,710
October 16, 2020	243,979

Working gas in underground storage compared with the 5-year maximum and minimum



PNGTS

- 188 mile pipeline from the NH – Quebec border to Dracut MA (interconnect with TGP)
- In conjunction with M&NE Pipeline the Joint Facilities extend from Westbrook, ME to Dracut, MA
- No storage or LNG interconnects
- Firm transport capacity North to South:
 - 399,285 Dth/d
 - WXP Phase 3 came into service Nov 1, '22 with 18,800 Dth/d
- Gas Control in Charleston, WV

